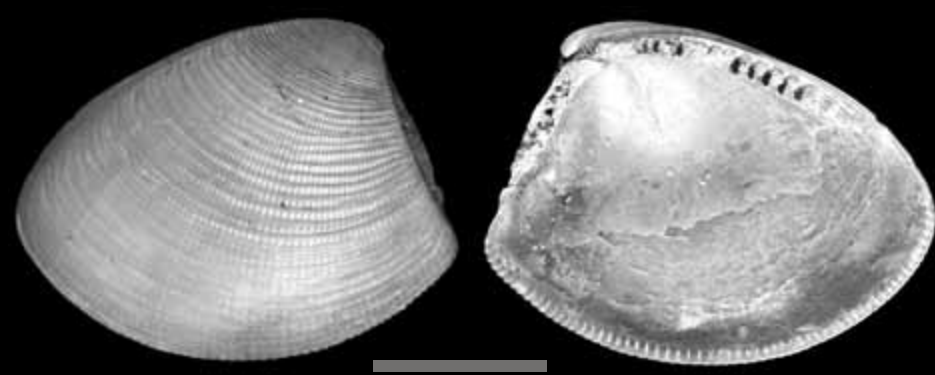


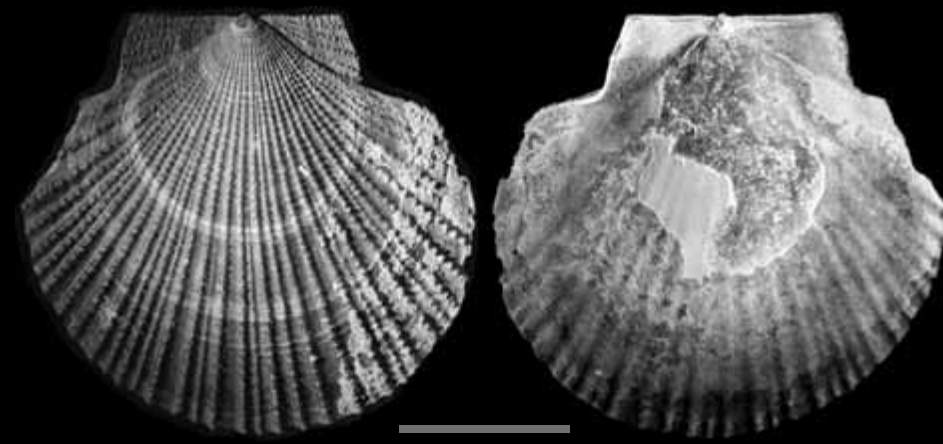
# Marine Fossilien aus der Böhlen-Formation (Unteroligozän) des Leipziger Südraumes

## Lamellibranchiata (Muscheln)

### Nuculidae

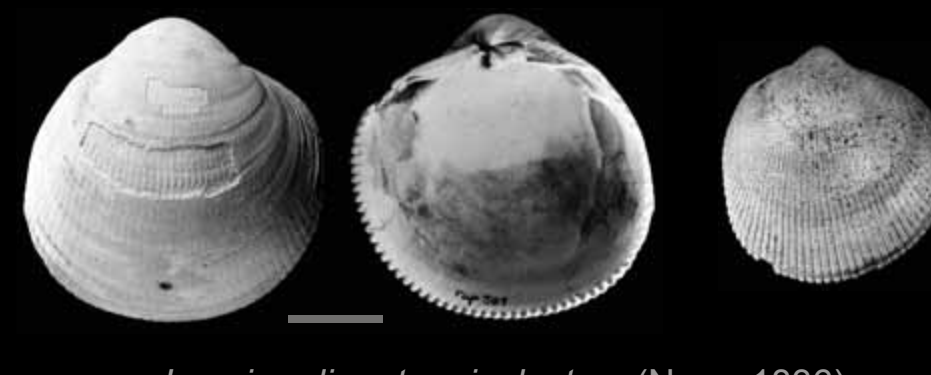


*Nucula duchasteli* NYST, 1835

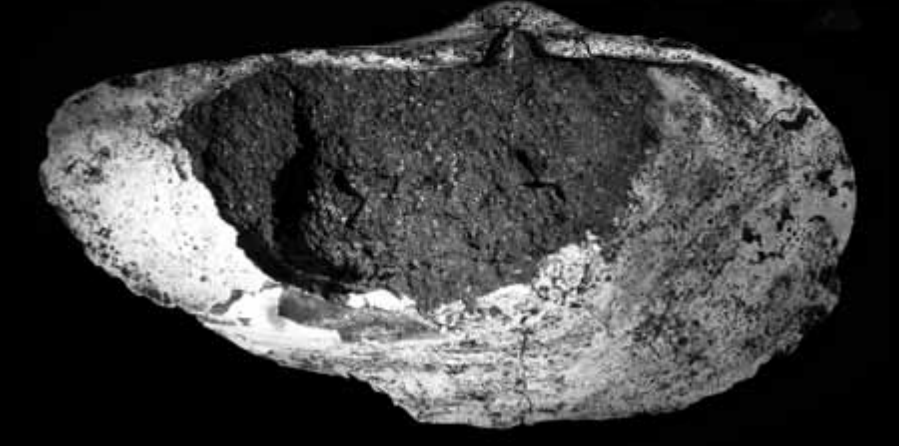


*Palliolium pictum* (GOLDFUSS, 1833)

### Cardiidae



*Laevicardium tenuisulcatum* (NYST, 1836)



*Panopea angusta* (NYST, 1836)

### Ostreidae

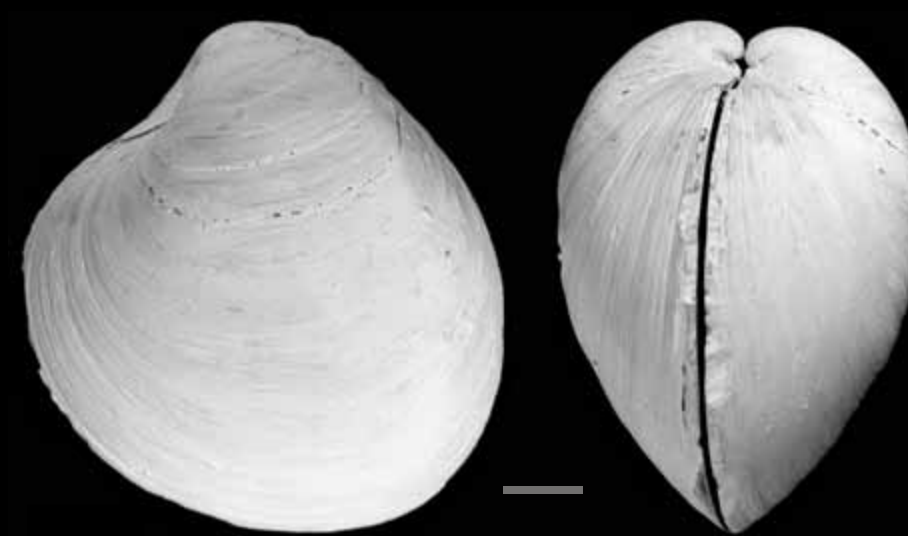


*Nucula greppini* DESHAYES, 1858



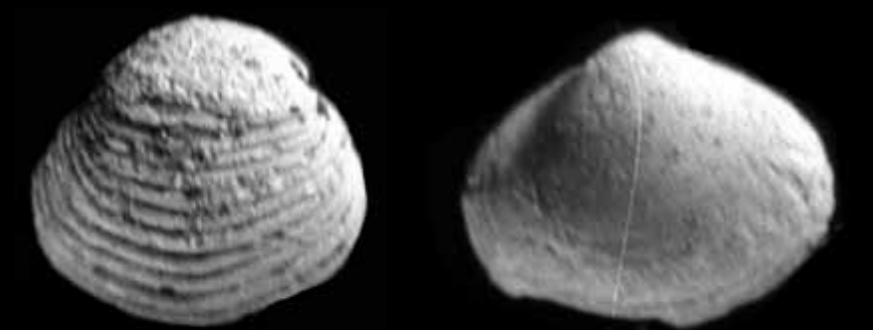
*Crassostrea cyathula* (LAMARCK, 1819)

### Arctiidae



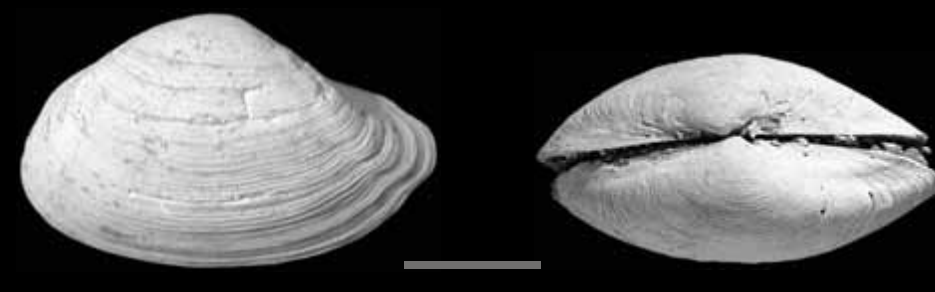
*Arctica islandica rotundata* (AGASSIZ, 1845)

### Corbulida



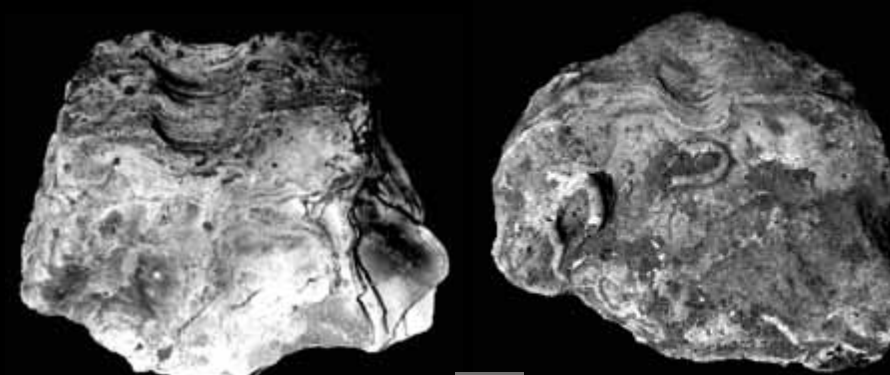
*Varicorbula gibba* (OLIVI, 1792)

### Nuculanidae



*Portlandia deshayesiana* (DUCHASTEL in NYST, 1835)

### Gryphaeidae



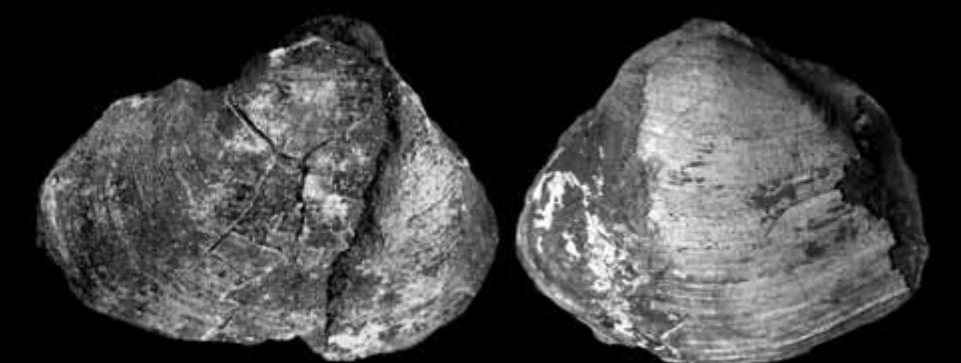
*Pycnodonte callifera* (LAMARCK, 1819)

### Veneridae



*Callista sublaevigata* (NYST, 1845)

### Thraciidae



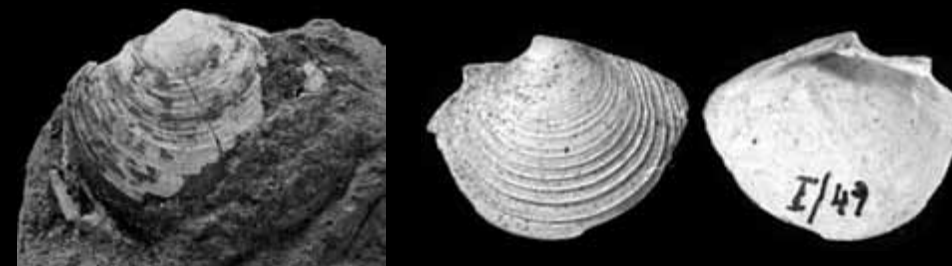
*Thracia nysti* VON KOENEN, 1868

### Limopsidae

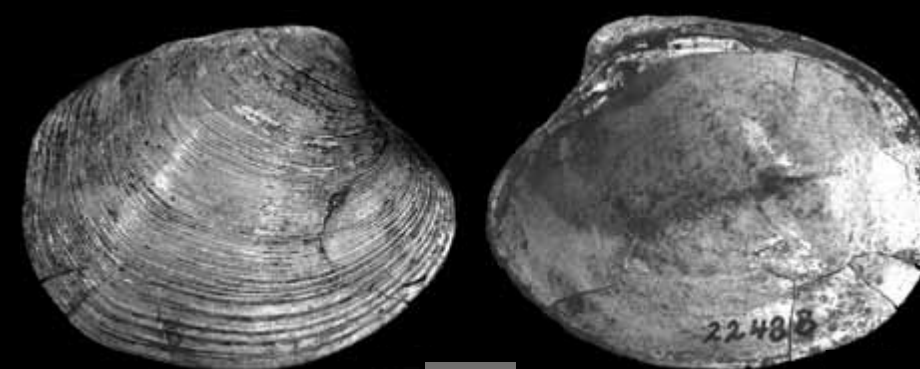


*Limopsis goldfussi* (NYST, 1845)

### Lucinidae

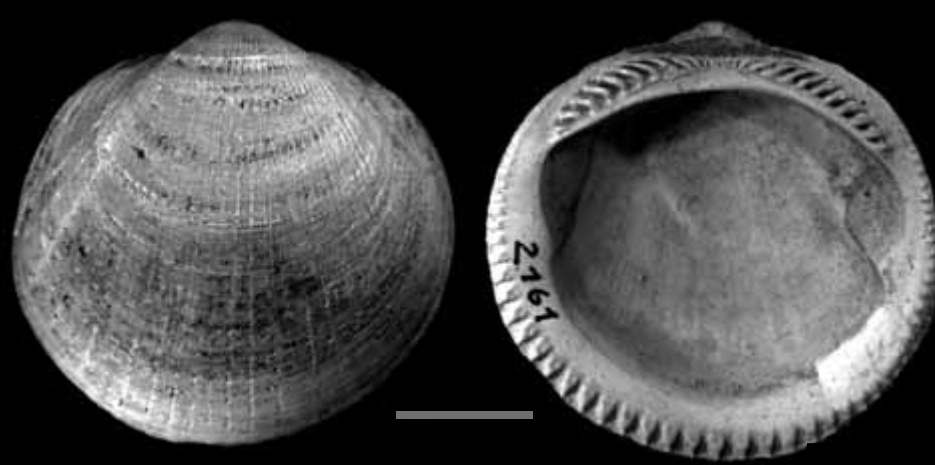


*Lucinoma borealis* (LINNAEUS, 1767)



*Pitar bosqueti* (HEBERT, 1849)

### Glycimerididae



*Glycimeris subterebularis* (ORBIGNY, 1852)

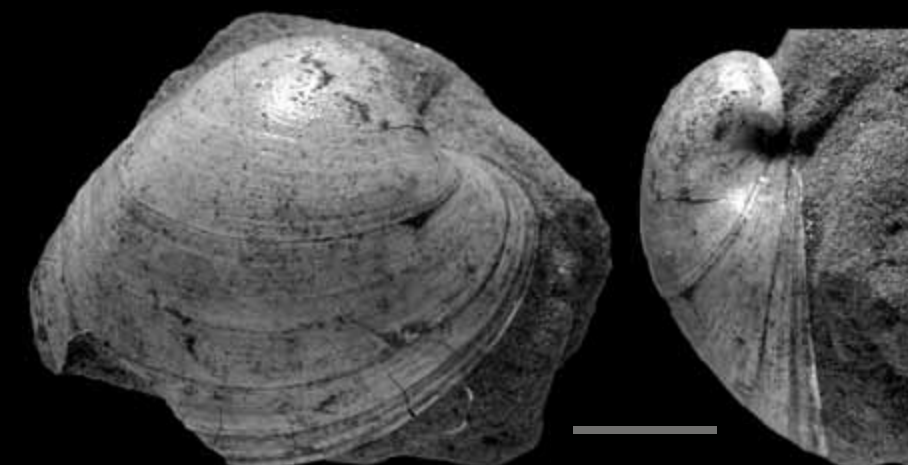
### Carditidae



*Cyclocardia omaliana* (NYST, 1845)

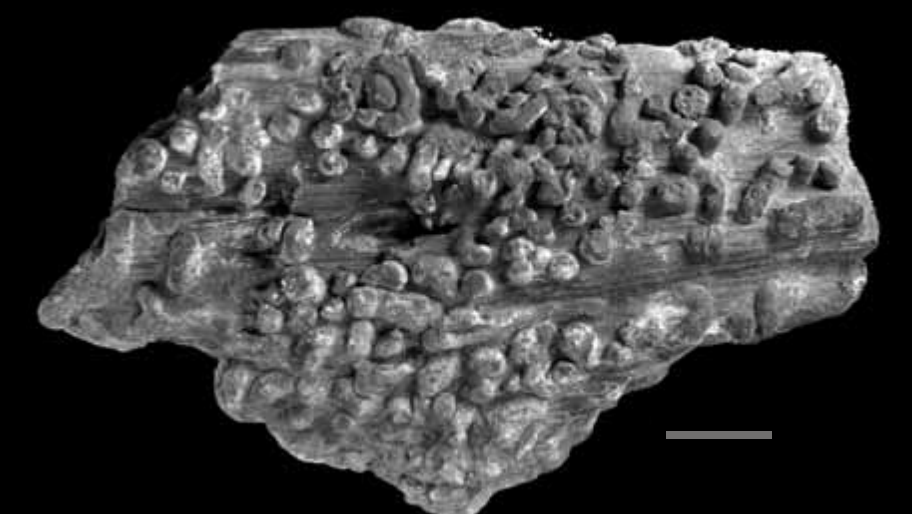
*Cyclocardia kickxi* (NYST & WESTENDORP, 1845)

### Glossidae



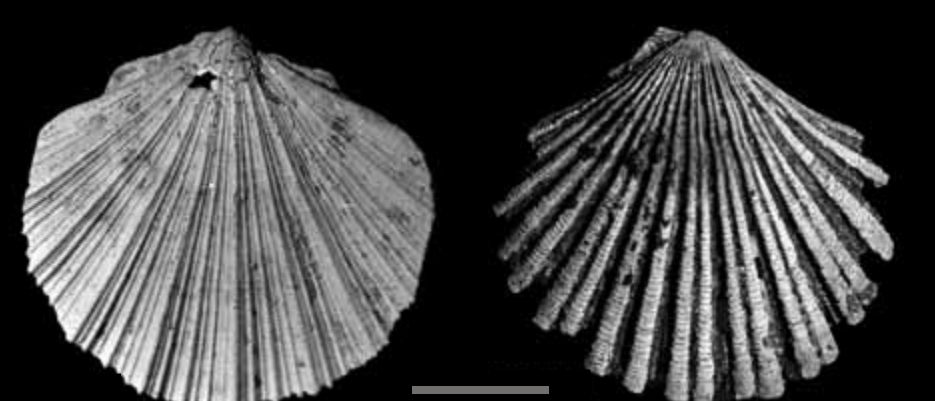
*Glossus subtransversus* (ORBIGNY, 1852)

### Teredinidae



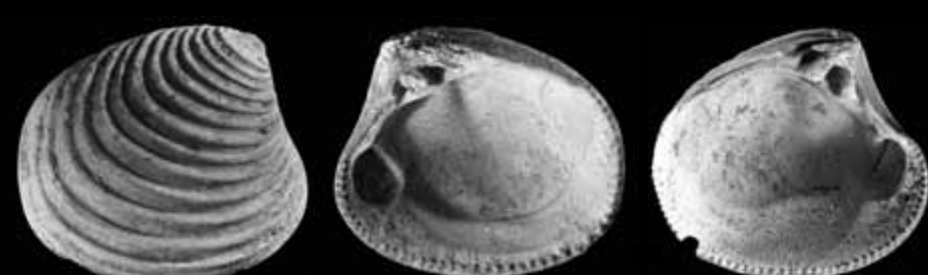
Phosphatisiertes Holz mit Bohrmuschelgängen (Teredolithes)

### Pectinidae



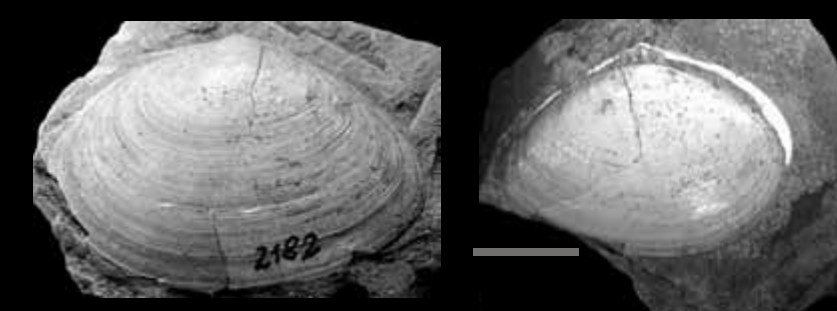
*Pecten (Hilberia) hoeninghausi* (DEFRANCE, 1825)

### Astartidae

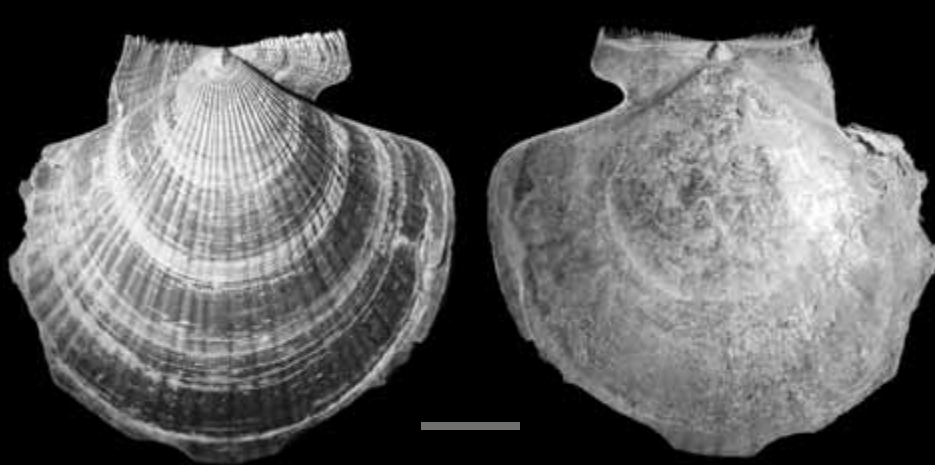


*Astarte kickxi* NYST, 1835

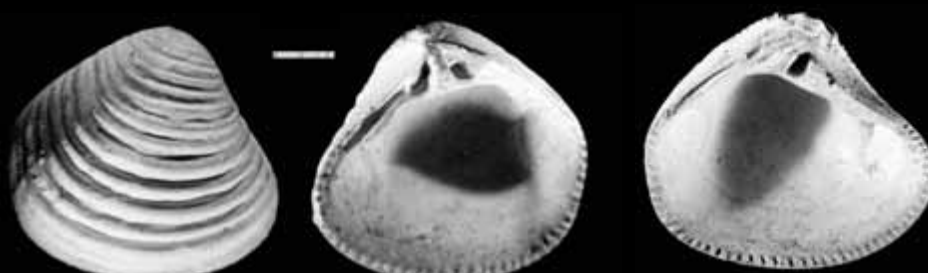
### Tellinidae



*Tellina benedeni nysti* DESHAYES, 1857

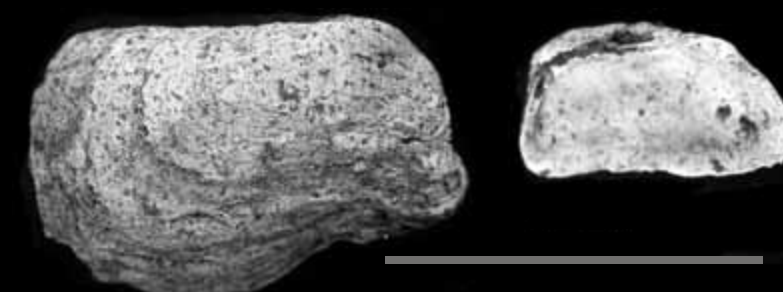


*Pecten (Hilberia) stettinensis* (VON KOENEN)

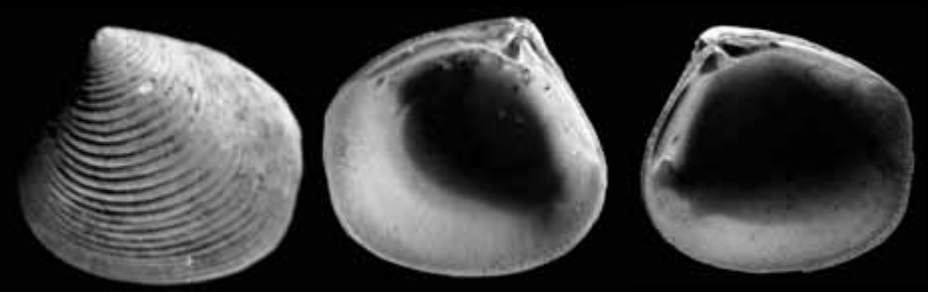


*Astarte pseudomalii* (BOSQUET, 1859)

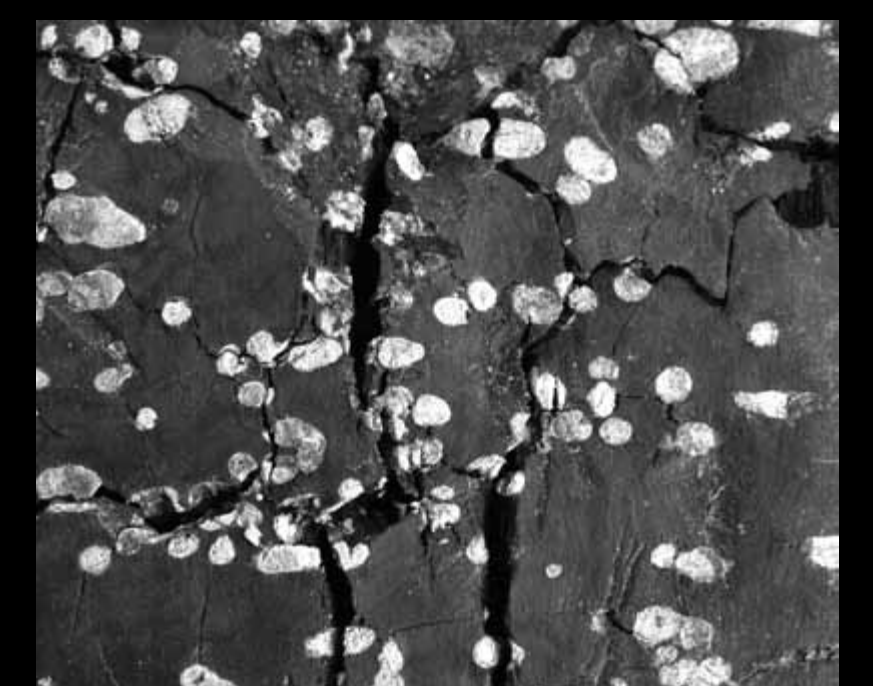
### Hiatellidae



*Hiatella arctica* (LINNAEUS, 1767)



*Astarte gracilis* MÜNSTER, 1837



Treibholz mit Bohrmuschelgängen (Teredolithes)